



POWERED ACCESS GUIDE

- Scissor Lifts
- Boom Platforms
- Trailer Mounted Lifts
- Van Mounted Lifts
- Personnel Lifts
- Certified Training



Member

www.shc.co.uk
0844 8245033





Quality of Service

The success of SHC has been built on the belief that service and quality of equipment coupled with a competitive hire rate are the key factors that our customers look for in a Plant, Tool Hire and Powered Access supplier.

Our attention to safety and service was recognised when we became one of the first companies to be awarded the HAE's prestigious 'Safe Hire' accreditation back in 2001. Amongst the other awards and accreditations we have received over the years are 'Hire Company of the Year', and the HAE's much sort after 'Excellence in Customer Care Award'.

Trade Associations:

We are active members of our trade associations; the HAE - (Hire Association Europe) is the leading trade association for hire and rental companies in the UK and Ireland, IPAF (International Powered Access Federation) promotes the safe and effective use of powered access worldwide and PASMA, the principal UK focus for Mobile Access Tower training, standards and best practice.

International Powered Access Federation

SHC are also proud to be part of IPAF the world authority for powered access equipment. Not only can you be very confident that all our equipment is maintained to the highest standards, but our staff are also fully trained and can offer you training courses to gain the certificate needed by law to operate a range of powered access equipment.

Ease of Payment

SHC offers an excellent array of payment options including all major credit cards.



Low-Cost Insurance

We now run the Hire Guard insurance scheme, which means that for just 15% of the hire cost you are fully covered against the theft or accidental damage of that equipment up to a value of £50,000! What is more the excess is very reasonable - ranging from £25 to £500, depending on the size of the claim!

Deposits: A deposit is required on every item hired unless you are an account customer.

Training

The Health & Safety at Work Act places a duty on employers to provide an adequate level of training in the safe use of Mobile Elevated Work Platforms (MEWPs) and the erection of Alloy Towers. SHC Hire Centres can arrange training with qualified IPAF and PASMA instructors for you or your workforce.

Terms and Conditions

All equipment hired out under HAE Terms and Conditions. Please refer to our website for full details.



SKIPTON: 01756 700205

Email: hires@shc.co.uk

ILKLEY: 01943 816361

Email: ilkley@shc.co.uk

RIPON: 01765 603011

Email: ripon@shc.co.uk

Northallerton: 01609 774360

Email: northallerton@shc.co.uk

Visit the SHC Website: www.shc.co.uk

IPAF Training for Powered Access now available in Skipton, Ilkley or Ripon at SHC Hire Centres

SHC Hire Centres can now offer **Operator** training on Powered Access in the following categories, each requiring separate training and qualifications



Successful trainees will receive a **PAL** (Powered Access Licence), valid for 5 years. The PAL card details the equipment categories the holder has been trained to operate.

COURSES AVAILABLE

Single Category - 1 day courses - any one of the following categories

- Static Vertical (1a)
- Static Boom (1b)
- Mobile Vertical (3a)
- Mobile Boom (3b)

Combined Category Courses

- 3a and 3b - 1 day (max 4 trainees per course) - £POA + IPAF Licence
- 3a and 1b - 1 day (max 4 trainees per course) - £POA + IPAF Licence

If you are interested in attending any of these courses or would like further information, please email: office@shc.co.uk or contact our training officer Katie Pitts on **01756 704621**

All prices are subject to VAT

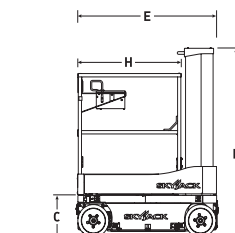
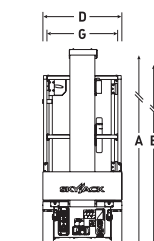
Other combinations may be available, please ask for details.

Training on Saturdays is available for an additional charge - POA

SKYJACK SJ16 VERTICAL MAST

TECHNICAL SPECIFICATION

	IMPERIAL	METRIC
A: WORKING HEIGHT:	22ft 2in	6.75 m
B: RAISED PLATFORM HEIGHT:	15ft 7in	4.75 m
C: LOWERED PLATFORM HEIGHT:	1ft 5in	0.45 m
D: OVERALL WIDTH:	2ft 5in	0.76 m
E: OVERALL LENGTH:	4ft 6in	1.37 m
F: STOWED HEIGHT:	5ft 10in	1.79 m
G: PLATFORM WIDTH (INSIDE DIMENSION):	2ft 3in	0.69 m
H: PLATFORM LENGTH (OUTSIDE DIMENSION) :	3ft	0.93 m
GROUND CLEARANCE (STOWED):	2.2in	5.33 cm
GROUND CLEARANCE (RAISED):	5ft 2in	1.60 cm
WHEELBASE:	3ft 5in	1.05 m
WEIGHT:	2129lb	966 kg
LOCAL FLOOR LOAD (WITH RATED LOAD):		827 kPa
LOCAL FLOOR LOAD (NO LOAD):		634 kPa
GRADEABILITY:		30 %
TURNING RADIUS (INSIDE):		0
TURNING RADIUS (OUTSIDE):	4ft 7in	1.40 m
LIFT TIME (WITH RATED LOAD):		18 seconds
DRIVE SPEED (STOWED):	2.8mph	4.0 km/h
DRIVE SPEED (RAISED):	0.5mph	0.8 km/h
MAXIMUM DRIVE HEIGHT:		Full Height
CAPACITY (OVERALL):	500 lb	227kg
MAXIMUM # OF PERSONS:		2



*hired equipment may not appear exactly as shown but will be of equal specification

SKIPTON: 01756 700205

Email: [hires@shc.co.uk](mailto: hires@shc.co.uk)

ILKLEY: 01943 816361

Email: [ilkley@shc.co.uk](mailto: ilkley@shc.co.uk)

RIPON: 01765 603011

Email: [ripon@shc.co.uk](mailto: ripon@shc.co.uk)

Northallerton: 01609 774360

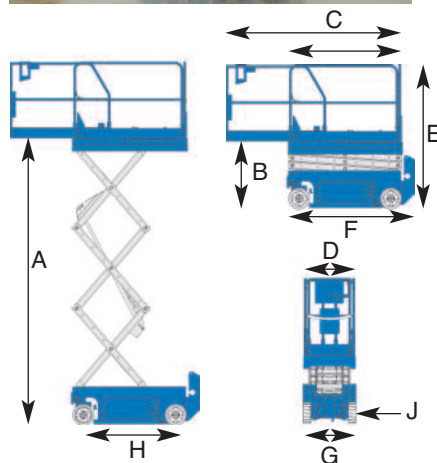
Email: [northallerton@shc.co.uk](mailto: northallerton@shc.co.uk)

Visit the SHC Website: www.shc.co.uk

1932 SCISSOR

TECHNICAL SPECIFICATION

	IMPERIAL	METRIC
WORKING HEIGHT:	24ft 11in	7.6m
A: PLATFORM HEIGHT:	18ft 5in	5.6m
B: HEIGHT STOWED (PLATFORM):	3ft 3.5in	1m
C: PLATFORM LENGTH - STOWED:	5ft 4in	1.63m
C: PLATFORM LENGTH - EXTENDED:	8ft 4in	2.54m
D: PLATFORM WIDTH (OUTSIDE):	2ft 5in	0.74m
E: HEIGHT STOWED (GUARDRAILS):	6ft 11in	2.11m
F: LENGTH	6ft	1.83m
G: WIDTH	2ft 8in	0.813cm
H: WHEELBASE	4ft 4in	1.32m
J: POTHOLE PROTECTORS DEPLOYED:	0.75in	2cm
HEIGHT STOWED (GUARDRAILS FOLDED):	5ft 9in	1.75m
GROUND CLEARANCE	2.4in	6cm
LIFT CAPACITY:	500lb	227kg
EXTENSION DECK LIFT CAPACITY:	250lb	113kg
TURNING RADIUS OUTSIDE:	5ft 1in	1.55m
TURNING RADIUS INSIDE:	zero	zero
POWER SOURCE:	24V (4 x 6V 245AH Batteries)	
DRIVE SPEED - STOWED:	0 - 2.5 mph	0 - 4 km/h
DRIVE SPEED - RAISED:	0 - 0.5 mph	0 - 0.8 km/h
RAISE/LOWER SPEED:		16/29 sec
CONTROLS:		Proportional
TYRES:	Solid Non-marking Rubber	
GRADEABILITY:		25%
DRIVE:	Dual Front Wheel	
BRAKES:	Multiple Disc Dual Rear Wheel	
WEIGHT:	3,313lb	1,503kg
WIND SPEED:		12.5m/s
MAXIMUM NUMBER OF PEOPLE:		2+ tools



*hired equipment may not appear exactly as shown but will be of equal specification

0844 8245033

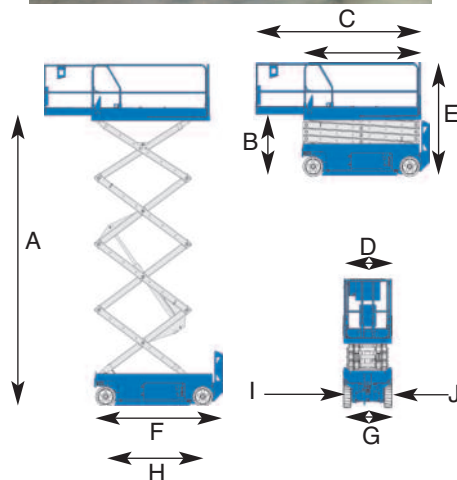
Visit the SHC Website: www.shc.co.uk

2632 SCISSOR

TECHNICAL SPECIFICATION

	IMPERIAL	METRIC
WORKING HEIGHT:	32ft 1in	9.80m
A: PLATFORM HEIGHT:	25ft 6in	7.80m
B: HEIGHT STOWED:	3ft 9.5in	1.16m
C: PLATFORM LENGTH - OUTSIDE:	7ft 5in	2.26m
C: PLATFORM LENGTH - EXTENDED:	10ft 5in	3.18m
D: PLATFORM WIDTH (OUTSIDE):	2ft 8in	.81m
E: HEIGHT STOWED	7ft 5in	2.26m
F: LENGTH - STOWED	8ft	2.44m
F: LENGTH - EXTENDED	10ft 11in	3.33m
G: WIDTH	2ft 8in	81cm
H: WHEELBASE	6ft 1in	1.85m
I: GROUND CLEARANCE - CENTRE	3.5in	0.9cm
J: GROUND CLEARANCE - POTHOLE GUARD	0.75in	2cm
LIFT CAPACITY:	500lb	227kg
EXTENSION DECK LIFT CAPACITY:	250lb	113kg
TURNING RADIUS OUTSIDE:	7ft	2.13m
TURNING RADIUS INSIDE:	Zero	
POWER SOURCE:	24V (4 x 6V 245AH Batteries)	
DRIVE SPEED - STOWED:	2.2mph	3.5km/h
DRIVE SPEED - RAISED:	0.5mph	0.8km/h
RAISE/LOWER SPEED:		30 / 40 sec
CONTROLS:		Proportional
TYRES:	Solid Non-marking Rubber	
GRADEABILITY:		25%
DRIVE:	dual front wheel	
BRAKES:	Multiple disc dual rear wheel	
WEIGHT:	4,413lb	1,956kg
WIND SPEED:		12.5m/s
MAXIMUM NUMBER OF PEOPLE:	2 + tools	

*hired equipment may not appear exactly as shown but will be of equal specification



SKIPTON: 01756 700205

Email: hires@shc.co.uk

ILKLEY: 01943 816361

Email: ilkley@shc.co.uk

RIPON: 01765 603011

Email: ripon@shc.co.uk

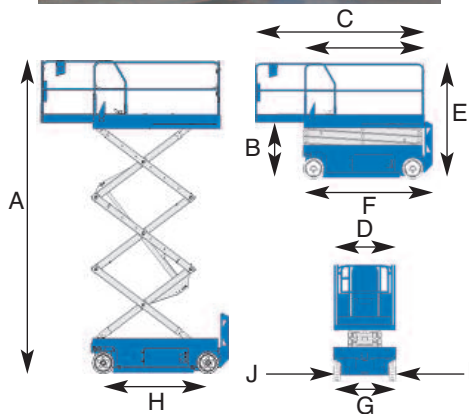
Northallerton: 01609 774360

Email: northallerton@shc.co.uk

3246 SCISSOR

TECHNICAL SPECIFICATION

	IMPERIAL	METRIC
WORKING HEIGHT MAXIMUM:	37ft 8in	11.50m
A: PLATFORM HEIGHT:	31ft 4in	9.50m
B: HEIGHT STOWED PLATFORM:	4ft 2.75in	1.29m
C: PLATFORM LENGTH - OUTSIDE:	7ft 5in	2.26m
C: PLATFORM LENGTH - EXTENDED:	10ft 5in	3.18m
D: PLATFORM WIDTH (OUTSIDE):	3ft 9.3in	1.15m
E: HEIGHT STOWED	7ft 10in	2.39m
LENGTH - EXTENDED	10ft 11in	3.33m
F: LENGTH - STOWED	7ft 11in	2.41m
G: WIDTH	3ft 10in	1.17m
H: WHEELBASE	6ft 1in	1.85m
I: GROUND CLEARANCE	4in	0.10m
J: POTHOLE PROTECTORS DEPLOYED:	0.75in	2cm
LIFT CAPACITY:	700lb	318kg
EXTENSION DECK LIFT CAPACITY:	250lb	113kg
TURNING RADIUS OUTSIDE:	7ft 6in	2.29m
TURNING RADIUS INSIDE:	Zero	
POWER SOURCE:	24V (4 x 6V 245AH Batteries)	
DRIVE SPEED - STOWED:	2.2mph	3.5km/h
DRIVE SPEED - RAISED:	0.5mph	0.8km/h
RAISE/LOWER SPEED:		35 / 57 sec
CONTROLS:		Proportional
TYRES:	Solid Non-marking Rubber	
GRADEABILITY:		25%
DRIVE:	dual front wheel	
BRAKES:	Multiple disc dual rear wheel	
WEIGHT:	6,200lb	2,812kg
WIND SPEED:		12.5m/s
MAXIMUM NUMBER OF PEOPLE:	2 + tools	



*hired equipment may not appear exactly as shown but will be of equal specification

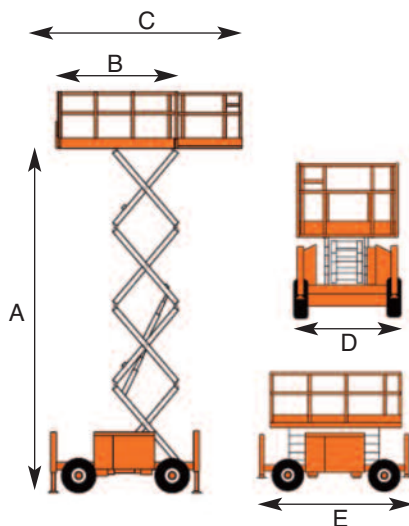
0844 8245033

Visit the SHC Website: www.shc.co.uk

SNORKEL SR2770 ROUGH TERRAIN SCISSOR

TECHNICAL SPECIFICATION

	IMPERIAL	METRIC
MAX. WORKING HEIGHT	39ft 8in	10.3m
A: MAX. PLATFORM HEIGHT	33ft 1in	8.28m
B: PLATFORM SIZE (STOWED)	8ft 11in 5ft 4in	2.74m x 1.65m
C: PLATFORM SIZE (EXTENDED)	13ft 1in 5ft 4in	4.0m x 1.65m
DECK EXTENSION	3ft 11in	1.2m
D: OVERALL WIDTH	5ft 9in	1.77m
E: OVERALL LENGTH	11ft	3.36m
F: STOWED HEIGHT	8ft 10in	2.56m
MIN. HEIGHT (GUARDRAILS FOLDED)	6ft 6in	1.75m
GROUND CLEARANCE	1ft 1in	350mm
PLATFORM CAPACITY	992lb	580kg
MAX. DRIVE HEIGHT	33ft 1in	8.28m
MAX. DRIVE SPEED (STOWED)	5mph	4.5km/h
MAX. DRIVE SPEED (ELEVATED)	4mph	0.8km/h
RAISE/LOWER TIME		26/30 sec
GRADEABILITY		35%
MAX. OUTRIGGER LEVELLING, FRONT TO REAR		6o
MAX. OUTRIGGER LEVELLING, SIDE TO SIDE		10o
INSIDE TURNING RADIUS	9ft 3in	2.83m
OUTSIDE TURNING RADIUS	15ft 1in	4.60m
TYRES	27 x 10.5 - 15 poly filled loader lug	
CONTROLS	proportional	
DRIVE SYSTEM	4 wheel driveF	
POWER SOURCE	Kubota D-902 water cooled diesel 22.5h	
GROSS WEIGHT	7980lb	2930kg



*hired equipment may not appear exactly as shown but will be of equal specification

SKIPTON: 01756 700205

Email: [hires@shc.co.uk](mailto: hires@shc.co.uk)

ILKLEY: 01943 816361

Email: [ilkley@shc.co.uk](mailto: ilkley@shc.co.uk)

RIPON: 01765 603011

Email: [ripon@shc.co.uk](mailto: ripon@shc.co.uk)

Northallerton: 01609 774360

Email: [northallerton@shc.co.uk](mailto: northallerton@shc.co.uk)

Visit the SHC Website: www.shc.co.uk

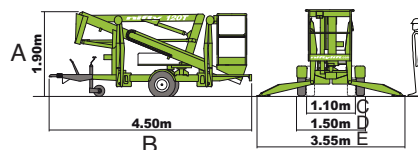
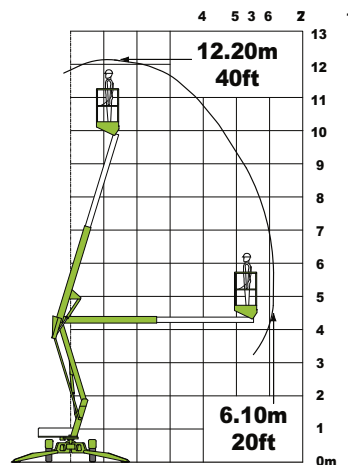
NIFTY 120T TRAILER MOUNT

TECHNICAL SPECIFICATION

	IMPERIAL	METRIC
WORKING HEIGHT:	40ft	12.20m
PLATFORM HEIGHT:	33ft 6in	10.20m
WORKING OUTREACH:	20ft	6.10m
A: MACHINE HEIGHT:	6ft 3in	1.90m
B: LENGTH:	14ft 9in	4.50m
C: RETRACTED WIDTH:	3ft 7in	1.10m
D: WIDTH:	4ft 11in	1.50m
E: WORKING WIDTH:	11ft 8in	3.55m
OUTRIGGER TYPE:	Hydraulic	
TRACTION DRIVE:	Available	
CAGE SIZE:	3ft 7in x 2ft 2in	1.10m x 0.65m
MINIMUM WEIGHT:	3100 lb	1400 kg
SAFE WORKING LOAD	440 lb	200 kg
POWER OPTIONS	Mains Only Battery Only Petrol or diesel only Bi-Energy (Engine & Battery)	

SAFETY FEATURES

- Outriggers with Audible and Visible Alarms
- Manual Recovery with Hand Pump
- Dual Control (Platform and Base)
- Lock Valves on all Hydraulic Cylinders
- Overrun Brakes with Gas Spring Hand Brake
- Dual Harness Points
- CE Marked



*hired equipment may not appear exactly as shown but will be of equal specification

0844 8245033

Visit the SHC Website: www.shc.co.uk

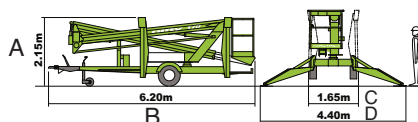
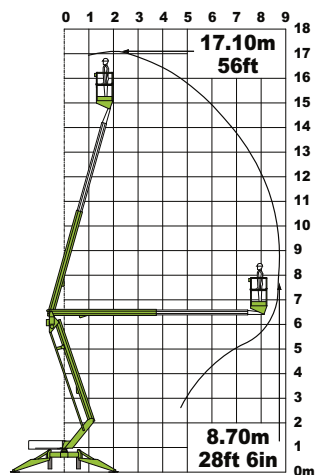
NIFTY 170T TRAILER MOUNT

TECHNICAL SPECIFICATION

	IMPERIAL	METRIC
WORKING HEIGHT:	56 ft	17.10m
PLATFORM HEIGHT:	49 ft 6in	15.10m
WORKING OUTREACH:	28 ft 6in	8.70m
A: MACHINE HEIGHT:	7 ft	2.15m
B: LENGTH:	20 ft 4in	6.20m
C: WIDTH:	5ft 5in	1.65m
D: WORKING WIDTH:	14 ft 5in	4.40m
OUTRIGGER TYPE:	Hydraulic	
TRACTION DRIVE:	Available	
CAGE SIZE:	3ft 7in x 2ft 2in	1.10m x 0.65m
CAGE ROTATION:	Available	
MINIMUM WEIGHT:	4200 lb	1900 kg
SAFE WORKING LOAD	440 lb	200 kg
POWER OPTIONS	Mains Only Battery Only Petrol or diesel only Bi-Energy (Engine & Battery)	

SAFETY FEATURES

- Pressure Sensitive Outriggers
- Audible and Visible Alarms
- Manual Recovery with Hand Pump
- Dual Control (Platform and Base)
- Lock Valves on all Hydraulic Cylinders
- Overrun Brakes with Gas Spring Hand Brake
- Dual Harness Points
- CE Marked



*hired equipment may not appear exactly as shown but will be of equal specification

SKIPTON: 01756 700205

Email: [hires@shc.co.uk](mailto: hires@shc.co.uk)

ILKLEY: 01943 816361

Email: [ilkley@shc.co.uk](mailto: ilkley@shc.co.uk)

RIPON: 01765 603011

Email: [ripon@shc.co.uk](mailto: ripon@shc.co.uk)

Northallerton: 01609 774360

Email: [northallerton@shc.co.uk](mailto: northallerton@shc.co.uk)

Visit the SHC Website: www.shc.co.uk

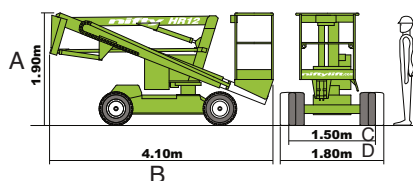
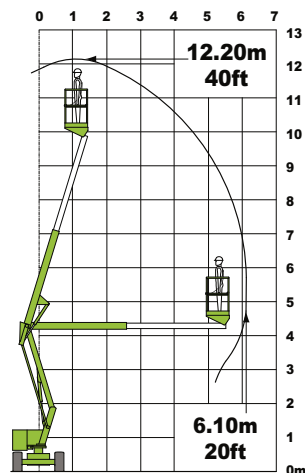
HR12 HEIGHT RIDER 2X4

TECHNICAL SPECIFICATION

	IMPERIAL	METRIC
WORKING HEIGHT:	40ft	12.20m
PLATFORM FLOOR HEIGHT:	33ft 5in	10.20m
WORKING OUTREACH:	20ft 1in	6.10m
A: HEIGHT STOWED:	6ft 3in	1.90m
B: OVERALL LENGTH:	13ft 5in	4.10m
C: WIDTH: NARROW	4ft 11in	1.50m
D: WIDTH STANDARD	5ft 11in	1.80m
WEIGHT	6,310lb	2,860kg
TURNING RADIUS OUTSIDE:	13ft 9in	4.20m
TURNING RADIUS INSIDE:	7ft 3in	2.22m
PLATFORM CAPACITY:	440lb	200kg
PLATFORM SIZE:	44 x 25in	1.10 x .65m
CONTROL SYSTEMS:	Fully Proportional Hydraulic	
POWER OPTIONS:	Bi Energy (Diesel engine & battery)	
MAX INCLINATION	40	
WIND SPEED:	12.5m/s	
MAXIMUM NUMBER OF PEOPLE:	2 + tools	

SAFETY FEATURES

- Automatic Fail Safe Brakes
- Tilt Alarm
- Foam Filled or Solid Tyres
- Manual Descent with Hand Pump
- Dual Controls (Platform and Base)
- Lock Valves on all Hydraulic Cylinders
- Dual Harness Points
- CE Marked



*hired equipment may not appear exactly as shown but will be of equal specification

0844 8245033

Visit the SHC Website: www.shc.co.uk

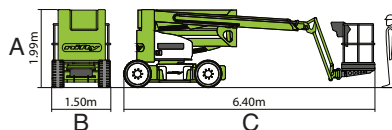
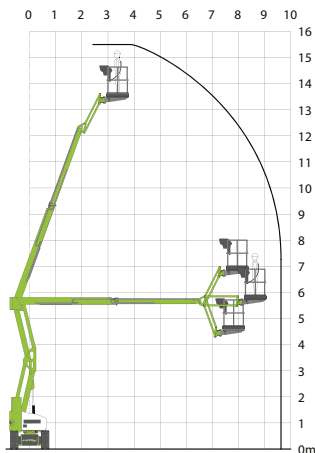
HR15N HEIGHT RIDER 2X4

TECHNICAL SPECIFICATION

	IMPERIAL	METRIC
WORKING HEIGHT:	51ft	15.50m
PLATFORM FLOOR HEIGHT:	44ft	13.50m
WORKING OUTREACH:	32ft	9.70m
SLEW:	360°	
FLY-BOOM ARC:	150°	
A: HEIGHT STOWED:	6ft 6in	1.99m
B: WIDTH:	4ft 11in	1.50m
LENGTH - STOWED:	17ft 1in	5.2m
C: LENGTH - OVERALL:	21ft	6.40m
WEIGHT:	15,980lb	7,250kg
TURNING RADIUS OUTSIDE:	9ft 11in	3m
PLATFORM ROTATION	180°	
PLATFORM CAPACITY:	500lb	225kg
PLATFORM SIZE:	4ft 11in x 2ft 8in	1.50 x .80m
DRIVE SPEED:	2.2mph	3.5km/h
GRADEABILITY:	25% (14°)	
CONTROL SYSTEMS:	Proportional Multifunctional	
POWER OPTIONS:	Battery Only	

SAFETY FEATURES

- Manual Recovery with Hand Pump
- Automatic Fail Safe Brakes
- Dual Controls (Platform and Base)
- Lock Valves on all Hydraulic Cylinders
- SIOPS*
- CE Marked
- Tilt Alarm
- Solid Tyres
- Dual Harness Points



*hired equipment may not appear exactly as shown but will be of equal specification

SKIPTON: 01756 700205

Email: hires@shc.co.uk

ILKLEY: 01943 816361

Email: ilkley@shc.co.uk

RIPON: 01765 603011

Email: ripon@shc.co.uk

Northallerton: 01609 774360

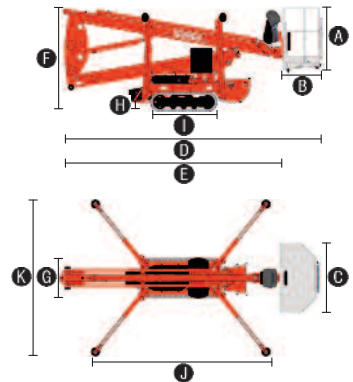
Email: northallerton@shc.co.uk

LEO 15GT TRACKED BOOM LIFT

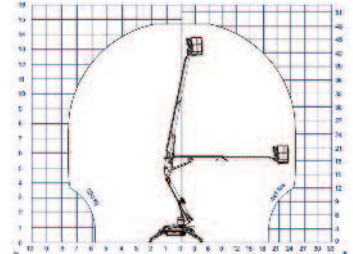
TECHNICAL SPECIFICATION

	IMPERIAL	METRIC
WORKING HEIGHT:	48ft 3in	14,70m
HORIZONTAL OUTREACH:	24ft 11in	7.60m
UP-AND-OVER CLEARANCE:	17ft 9in	5.40m
A: PLATFORM HEIGHT:	3ft 7in	1.10m
B: PLATFORM LENGTH:	2ft 4in	0.70m
C: PLATFORM WIDTH:	4ft 7in	1.40m
D: LENGTH, OVERALL:	17ft 3in	5.25m
E: LENGTH WITHOUT BASKET:	14ft 10in	4.52m
F: HEIGHT, TRAVELLING POSITION	6ft 6in	1.99m
G: WIDTH MINIMUM:	2ft 7in	0.78m
H: GROUND CLEARANCE MAX:	1ft 4 1/2in	0.42m
I: TRACK:	4ft 4in X 7in	133 X 18cm
J: LENGTH OUTRIGGER FOOTPRINT:	11ft 10in	3.61m
K: WIDTH OUTRIGGER FOOTPRINT:	10ft 4in	3.15m
STABILISER/OUTRIGGER PLATE:	7in	0.18m
BASKET CAPACITY:	441lb	200kg
TURRET ROTATION:	355°	
TO BE JACKED UP ON GROUND SLOPE OF:	13° / 23.0 %	
GRADEABILITY:	16,7° 30,0	
TRAVEL SPEED:	0.6mph	1.0km/h
TOTAL WEIGHT:	3925lb	1780kg
POWER OPTIONS:	Bi-Energy (Engine & Battery)	

*hired equipment may not appear exactly as shown but will be of equal specification



WORKING ENVELOPE



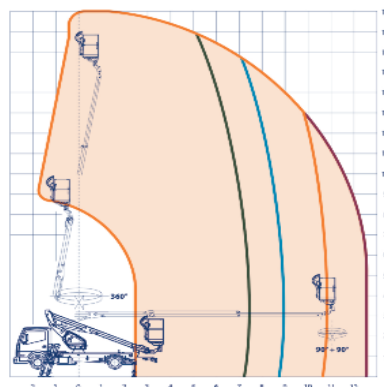
0844 8245033

Visit the SHC Website: www.shc.co.uk

SCORPION 1812 VAN MOUNTED BOOM LIFT

TECHNICAL SPECIFICATION

	IMPERIAL	METRIC
WORKING HEIGHT:	52ft	16m
PLATFORM HEIGHT:	52ft	16m
WORKING OUTREACH (1 OPERATOR):	39ft	12m
WORKING OUTREACH (2 OPERATORS):	29ft	9m
LOAD CAPACITY (1 OPERATOR):	264lb	120kg
LOAD CAPACITY (2 OPERATORS):	440lb	200kg
STANDING ENGINE HEIGHT:	9ft 10in	3m
STANDING ENGINE WIDTH:	6ft 10in	2.1m
STANDING ENGINE WIDTH:	21ft 3in	6.5m
SLEW:	360°	
PLATFORM SIZE:	4ft 7in x 2ft 3in	1.4m x .70m
CONTROLS:	Proportional hydraulic type	
BOOM:	Telescopic steel	



- Priority of platform controls
- Locks for the safety belts on the platform
- Emergency push-button with engine stop
- Hand pump for the emergency descent of the platform
- Self-locking device on rotation
- Aerial structure locking till the stabilisation is complete
- Thermal protections on the electric system
- Protection with pressure relief valve on the hydraulic system
- Over centre lock valves on all the cylinders
- Extended outriggers check light

**Maximum Platform
Height; 16m**

**Maximum
Outreach; 10m**

*hired equipment may not appear exactly as shown but will be of equal specification

SKIPTON: 01756 700205

Email: hires@shc.co.uk

ILKLEY: 01943 816361

Email: ilkley@shc.co.uk

RIPON: 01765 603011

Email: ripon@shc.co.uk

Northallerton: 01609 774360

Email: northallerton@shc.co.uk

Visit the SHC Website: www.shc.co.uk

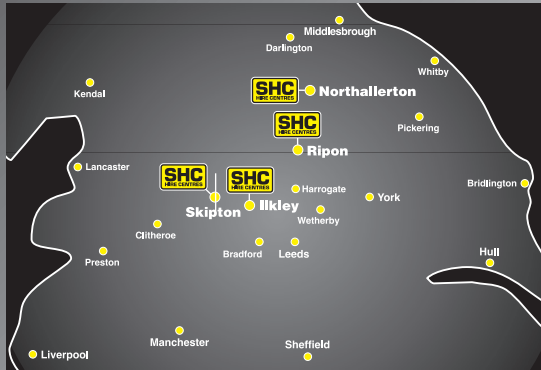


Notes

This image shows a blank sheet of white paper with horizontal ruling lines. The lines are evenly spaced and extend across the width of the page. There are no margins, text, or other markings on the paper.

0844 8245033

Visit the SHC Website: www.shc.co.uk



SKIPTON

Carleton New Road, Skipton, North Yorkshire BD23 2DE
Tel: 01756 700205 Fax: 01756 796175 Email: hires@shc.co.uk

ILKLEY

Riverside Business Park, Leeds Road, Ilkley, West Yorkshire LS29 8JZ
Tel: 01943 816361 Fax: 01756 796175 Email: ilkley@shc.co.uk

RIPON

Unit 8, Camp Hill Close, Dallamires Lane, Ripon, North Yorkshire HG4 1QY
Tel: 01765 603011 Fax: 01756 796175 Email: ripon@shc.co.uk

NORTHALLERTON

Unit 1, County Business Park, Darlington Road, Northallerton,
North Yorkshire DL6 2NQ
Tel: 01609 774360 Fax: 01756 796175 Email: northallerton@shc.co.uk

OPENING TIMES

FOR ALL OUR DEPOTS: Mon-Fri 7.30am - 5.00pm, Saturday 8.00am - 12.00 noon

www.shc.co.uk



SHC have made every effort to ensure all information contained in this publication is correct at time of going to print. However SHC reserve the right to amend prices, or specifications at any time without prior notification.

